

### GENERAL DESCRIPTION

The SGM2571 is a small, ultra-low on-resistance load switch with reverse current protection and controlled turn-on. The device contains a low R<sub>ON</sub> N-MOSFET that operates over an input voltage range of 1V to 5.5V and can support a maximum continuous current of 1A.

An integrated charge pump biases the N-MOSFET switch in order to achieve a low switch R<sub>ON</sub>. The switch is controlled by ON pin, which is capable of interfacing directly with low voltage control signals. The rise time of the device is controlled internally to avoid inrush current.

The small size and low R<sub>ON</sub> make the device very suitable for space limited, battery powered applications. The wide input voltage range of the switch makes it a versatile solution for many different voltage rails. The controlled rise time of the device greatly reduces inrush current caused by large bulk load capacitances, thereby reducing or eliminating power supply droop. The SGM2571 further reduces the total solution size by integrating a 270Ω pull-down resistor for quick output discharge (QOD) when the switch is turned off.

The SGM2571 is available in a Green WLCSP-0.8×0.8-4B package.

### FEATURES

- **Integrated N-MOSFET Load Switch**
- **1V to 5.5V Input Voltage Range**
- **Ultra-Low On-Resistance**
  - ◆ R<sub>ON</sub> = 34mΩ at V<sub>IN</sub> = 5V
  - ◆ R<sub>ON</sub> = 34mΩ at V<sub>IN</sub> = 3.3V
- **1A Maximum Continuous Switch Current**
- **Low Shutdown Current: 90nA (TYP)**
- **Reverse Current Protection**
- **Low Threshold 1.2V GPIO Control Input**
- **Bidirectional Power Supply for Power Zone Application**
- **Rise Time: 60μs (TYP)**
- **Quick Output Discharge**
- **Available in a Green WLCSP-0.8×0.8-4B Package**

### APPLICATIONS

- Smartphone, Mobile Phone
- Ultrathin, Ultrabook/Notebook PC
- Tablet PC, Phablet
- Wearable Technology
- Solid State Drive
- Digital Camera

### TYPICAL APPLICATION

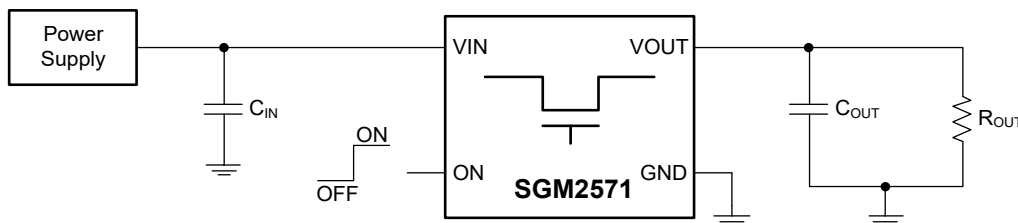


Figure 1. Simplified Schematic

# 5.5V, 1A, 34mΩ R<sub>ON</sub>, Load Switch with SGM2571 Reverse Current Protection and Controlled Turn-On

## PACKAGE/ORDERING INFORMATION

MODEL	PACKAGE DESCRIPTION	SPECIFIED TEMPERATURE RANGE	ORDERING NUMBER	PACKAGE MARKING	PACKING OPTION
SGM2571AD	WLCSP-0.8×0.8-4B	-40°C to +85°C	SGM2571ADYG/TR	A8 X	Tape and Reel, 3000

## MARKING INFORMATION

NOTE: X = Date Code.

**YY** — Serial Number

**X**

└── Date Code - Quarter

Green (RoHS & HSF): SG Micro Corp defines "Green" to mean Pb-Free (RoHS compatible) and free of halogen substances. If you have additional comments or questions, please contact your SGMICRO representative directly.

## ABSOLUTE MAXIMUM RATINGS

Input Voltage Range, V <sub>IN</sub> .....	-0.3V to 6V
Output Voltage Range, V <sub>OUT</sub> .....	-0.3V to 6V
ON Pin Voltage Range, V <sub>ON</sub> .....	-0.3V to 6V
Maximum Continuous Switch Current, I <sub>MAX</sub> .....	1A (MAX)
Maximum Pulsed Switch Current, Pulse < 300μs, 2% Duty Cycle, I <sub>PLS</sub> .....	1.5A (MAX)
Junction Temperature.....	+150°C
Storage Temperature Range.....	-65°C to +150°C
Lead Temperature (Soldering, 10s).....	+260°C
ESD Susceptibility	
HBM.....	4000V
CDM.....	1000V

## RECOMMENDED OPERATING CONDITIONS

Input Voltage Range, V <sub>IN</sub> .....	1V to 5.5V
Output Voltage Range, V <sub>OUT</sub> .....	0V to 5.5V
ON Pin Input High Voltage, V <sub>IH</sub> .....	1.1V to 5.5V
ON Pin Input Low Voltage, V <sub>IL</sub> .....	0V to 0.4V
Operating Ambient Temperature Range.....	-40°C to +85°C
Operating Junction Temperature Range.....	-40°C to +125°C

## OVERSTRESS CAUTION

Stresses beyond those listed in Absolute Maximum Ratings may cause permanent damage to the device. Exposure to absolute maximum rating conditions for extended periods may affect reliability. Functional operation of the device at any conditions beyond those indicated in the Recommended Operating Conditions section is not implied.

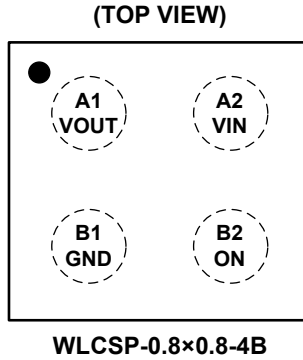
## ESD SENSITIVITY CAUTION

This integrated circuit can be damaged if ESD protections are not considered carefully. SGMICRO recommends that all integrated circuits be handled with appropriate precautions. Failure to observe proper handling and installation procedures can cause damage. ESD damage can range from subtle performance degradation to complete device failure. Precision integrated circuits may be more susceptible to damage because even small parametric changes could cause the device not to meet the published specifications.

## DISCLAIMER

SG Micro Corp reserves the right to make any change in circuit design, or specifications without prior notice.

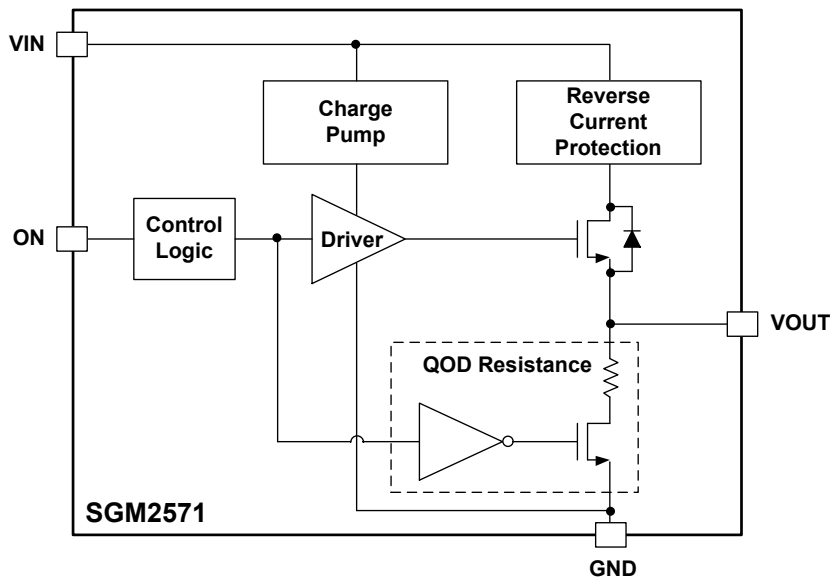
PIN CONFIGURATION



PIN DESCRIPTION

PIN	NAME	DESCRIPTION
A1	VOUT	Switch Output.
A2	VIN	Switch Input. Use a bypass capacitor (ceramic) to ground.
B1	GND	Ground.
B2	ON	Active High Switch Control Input. Do not float this pin.

FUNCTIONAL BLOCK DIAGRAM



# 5.5V, 1A, 34mΩ R<sub>ON</sub>, Load Switch with SGM2571 Reverse Current Protection and Controlled Turn-On

## ELECTRICAL CHARACTERISTICS

(V<sub>IN</sub> = 1V to 5.5V, C<sub>IN</sub> = 1μF, C<sub>OUT</sub> = 0.1μF, Full = -40°C to +85°C, typical values are at T<sub>J</sub> = +25°C, unless otherwise noted.)

PARAMETER	SYMBOL	CONDITIONS	TEMP	MIN	TYP	MAX	UNITS
Input Voltage Range	V <sub>IN</sub>		Full	1		5.5	V
Quiescent Current	I <sub>Q</sub>	V <sub>IN</sub> = 5V, V <sub>ON</sub> = 1.2V, I <sub>OUT</sub> = 0mA	Full		320	560	nA
		V <sub>IN</sub> = 3.3V, V <sub>ON</sub> = 1.2V, I <sub>OUT</sub> = 0mA	Full		220	400	
		V <sub>IN</sub> = 1V, V <sub>ON</sub> = 1.2V, I <sub>OUT</sub> = 0mA	Full		140	300	
Shutdown Current	I <sub>SD</sub>	V <sub>IN</sub> = 5.5V, V <sub>ON</sub> = 0V	Full		90	440	nA
Supply Leakage Current in Shutdown Mode	I <sub>LEAKAGE</sub>	V <sub>IN</sub> = 5.5V, V <sub>ON</sub> = 0V, V <sub>OUT</sub> = 0V	Full			450	nA
On-Resistance	R <sub>ON</sub>	V <sub>IN</sub> = 5V, V <sub>ON</sub> = 1.2V, I <sub>OUT</sub> = -200mA	Full		34	60	mΩ
		V <sub>IN</sub> = 3.3V, V <sub>ON</sub> = 1.2V, I <sub>OUT</sub> = -200mA	Full		34	60	
ON Pin Leakage Current	I <sub>ON</sub>	V <sub>ON</sub> = 5.5V	Full			420	nA
Reverse Current When Disabled	I <sub>RC</sub>	V <sub>IN</sub> = V <sub>ON</sub> = 0V, V <sub>OUT</sub> = 5V	Full			1	μA
Output Pull-Down Resistance	R <sub>PD</sub>	V <sub>IN</sub> = 2.5V, V <sub>ON</sub> = 0V, I <sub>OUT</sub> = 2mA	Full		280	370	Ω
		V <sub>IN</sub> = 5V, V <sub>ON</sub> = 0V, I <sub>OUT</sub> = 2mA	Full		270	360	
ON Pin Input Low Voltage	V <sub>IL</sub>		Full			0.4	V
ON Pin Input High Voltage	V <sub>IH</sub>		Full	1.1			

# 5.5V, 1A, 34mΩ R<sub>ON</sub>, Load Switch with Reverse Current Protection and Controlled Turn-On

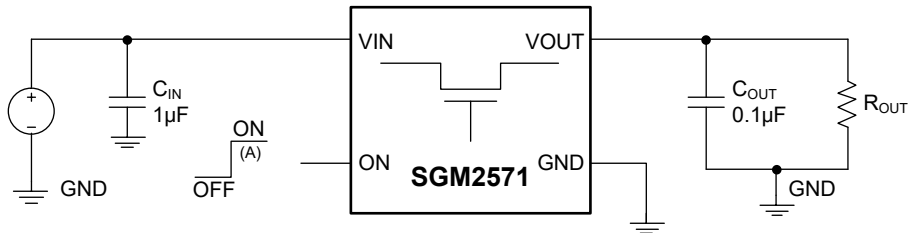
## SGM2571

### SWITCHING CHARACTERISTICS

(Full = -40°C to +85°C, typical values are at T<sub>J</sub> = +25°C, unless otherwise noted.)

PARAMETER	SYMBOL	CONDITIONS	TEMP	MIN	TYP	MAX	UNITS
<b>V<sub>IN</sub> = 3.3V, T<sub>J</sub> = +25°C, unless otherwise noted.</b>							
Turn-On Time	t <sub>ON</sub>	R <sub>OUT</sub> = 10Ω, C <sub>OUT</sub> = 0.1μF, Figure 2 and Figure 3	+25°C		220		μs
Turn-Off Time	t <sub>OFF</sub>		+25°C		20		
V <sub>OUT</sub> Rise Time	t <sub>R</sub>		Full		85	130	
V <sub>OUT</sub> Fall Time	t <sub>F</sub>		+25°C		2		
Delay Time	t <sub>D</sub>		+25°C		205		
<b>V<sub>IN</sub> = 5V, T<sub>J</sub> = +25°C, unless otherwise noted.</b>							
Turn-On Time	t <sub>ON</sub>	R <sub>OUT</sub> = 10Ω, C <sub>OUT</sub> = 0.1μF, Figure 2 and Figure 3	+25°C		185		μs
Turn-Off Time	t <sub>OFF</sub>		+25°C		35		
V <sub>OUT</sub> Rise Time	t <sub>R</sub>		Full		60	200	
V <sub>OUT</sub> Fall Time	t <sub>F</sub>		+25°C		2		
Delay Time	t <sub>D</sub>		+25°C		175		

### PARAMETER MEASUREMENT INFORMATION



A: Rise and fall times of the control signal are 100ns.

Figure 2. Test Circuit

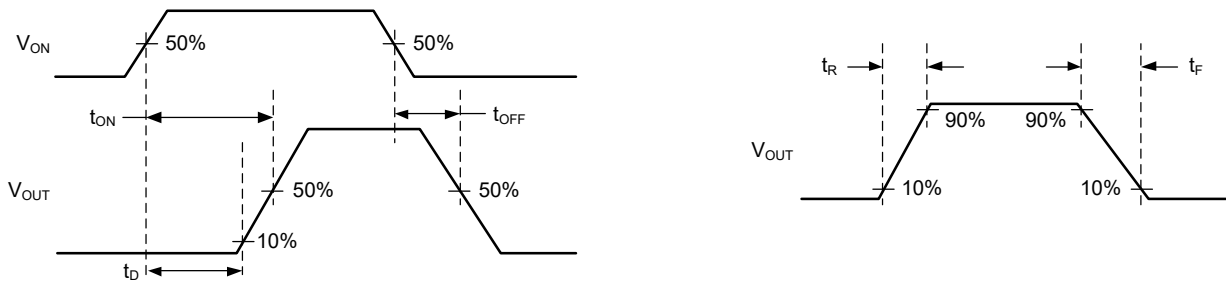
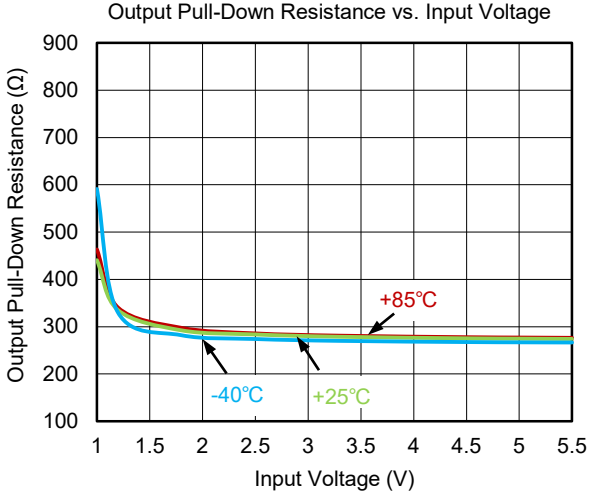
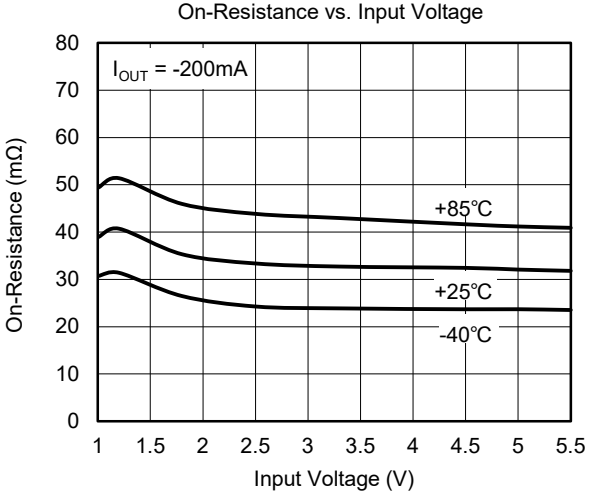
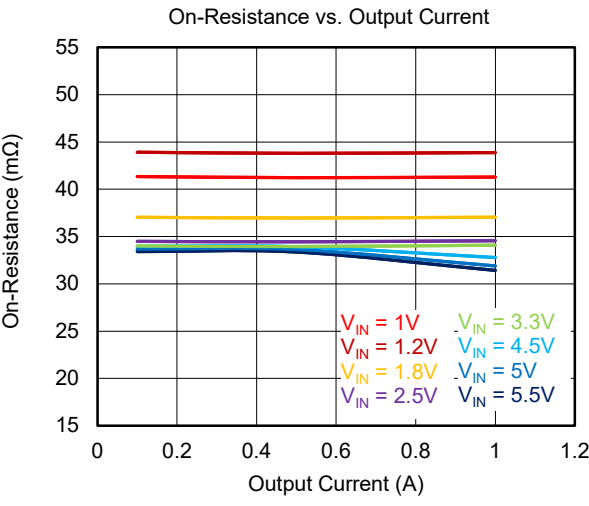
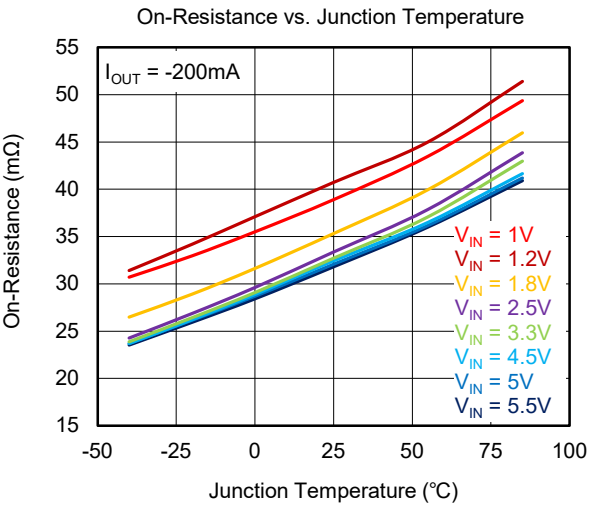
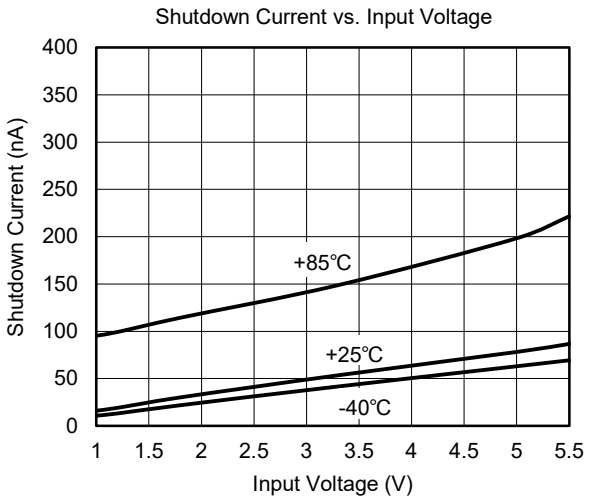
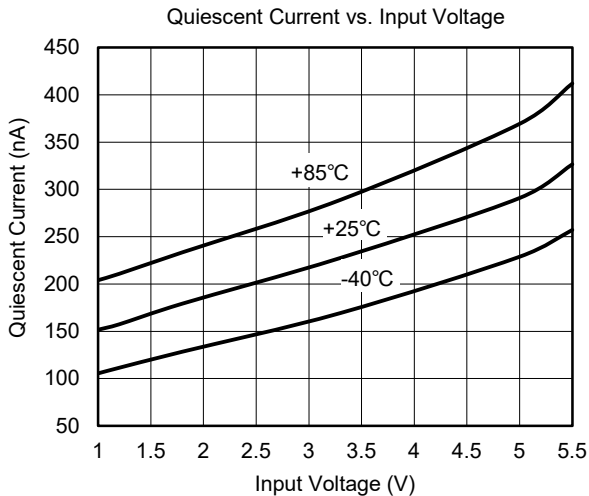


Figure 3. Timing Waveforms

# SGM2571 5.5V, 1A, 34mΩ R<sub>ON</sub>, Load Switch with Reverse Current Protection and Controlled Turn-On

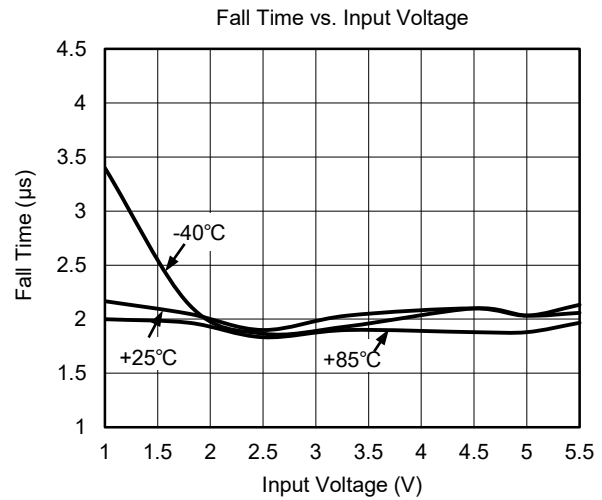
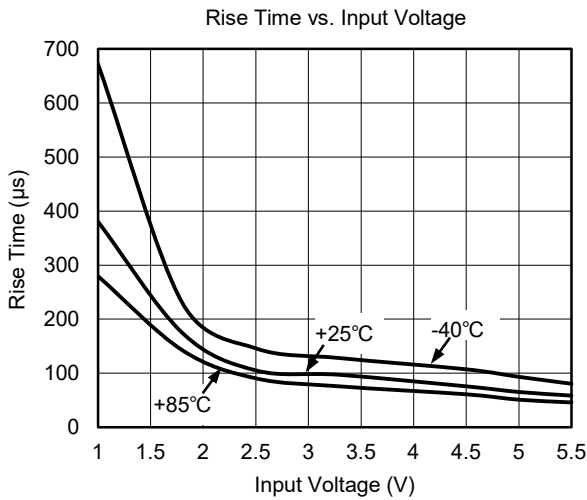
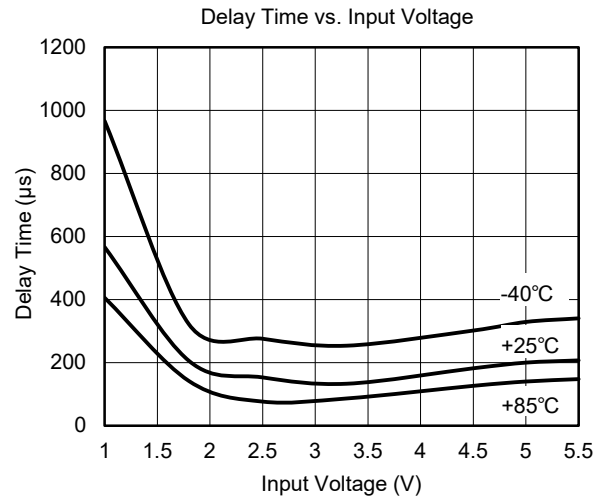
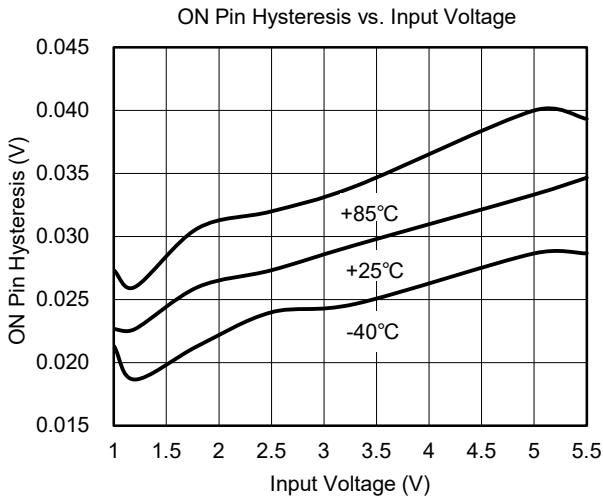
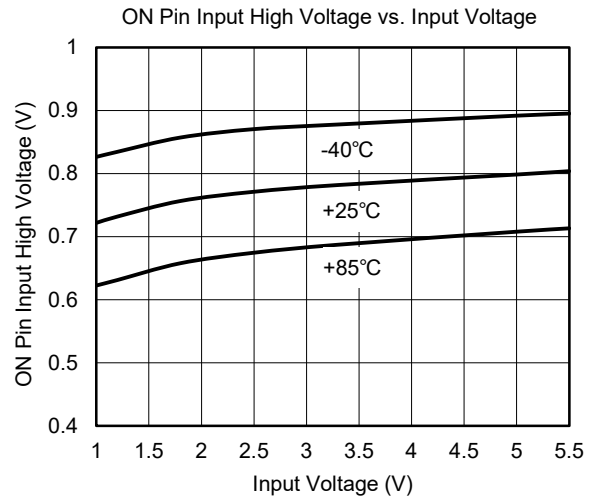
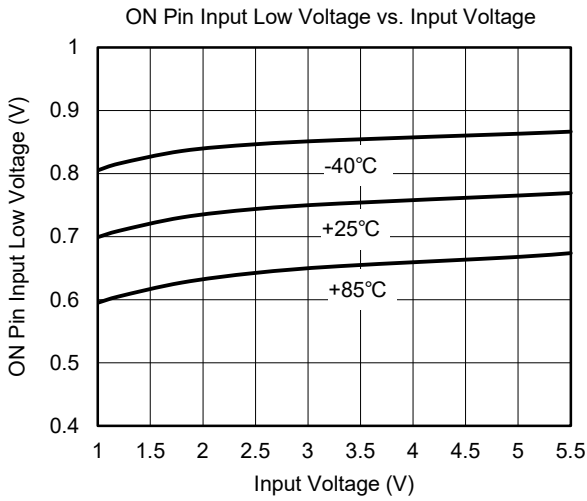
## TYPICAL PERFORMANCE CHARACTERISTICS

C<sub>IN</sub> = 1μF, C<sub>OUT</sub> = 0.1μF, R<sub>OUT</sub> = 10Ω, V<sub>IH</sub> = 1.2V, V<sub>IL</sub> = 0V, T<sub>J</sub> = +25°C, unless otherwise noted.



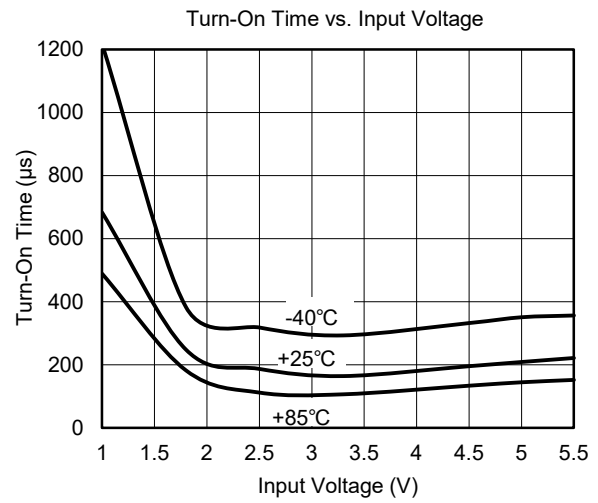
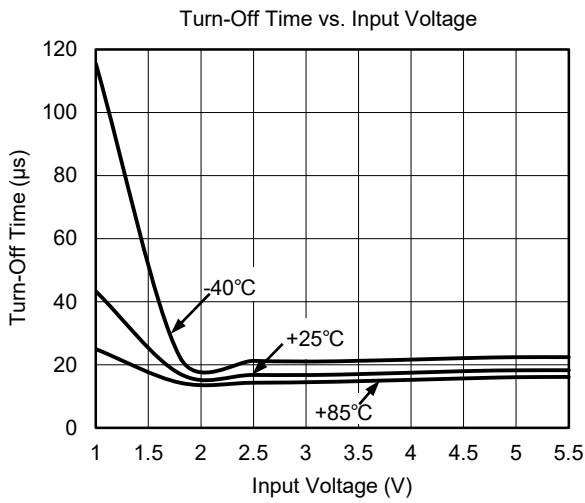
**TYPICAL PERFORMANCE CHARACTERISTICS (continued)**

C<sub>IN</sub> = 1μF, C<sub>OUT</sub> = 0.1μF, R<sub>OUT</sub> = 10Ω, V<sub>IH</sub> = 1.2V, V<sub>IL</sub> = 0V, T<sub>J</sub> = +25°C, unless otherwise noted.



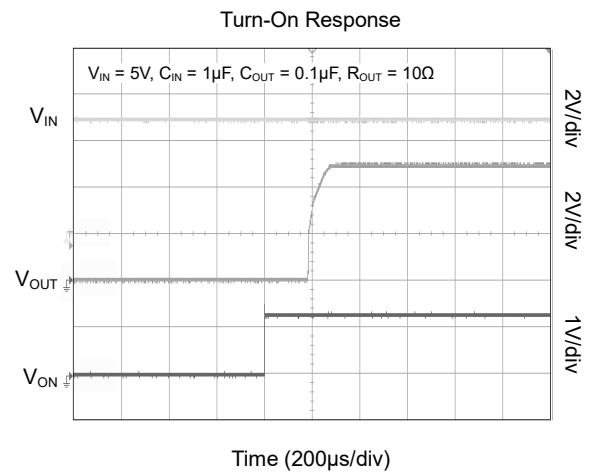
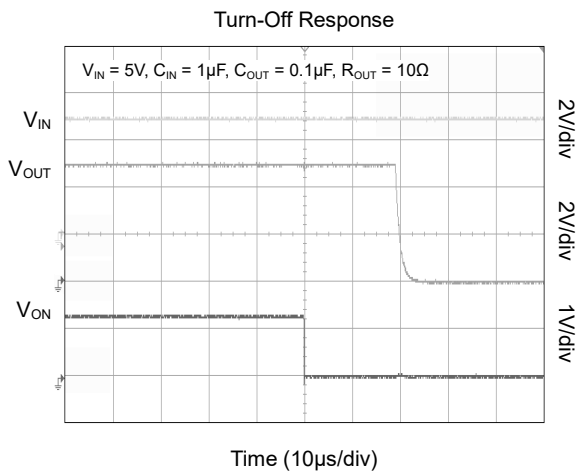
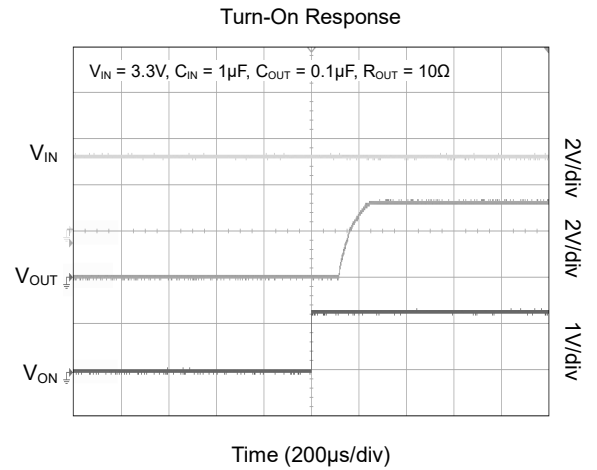
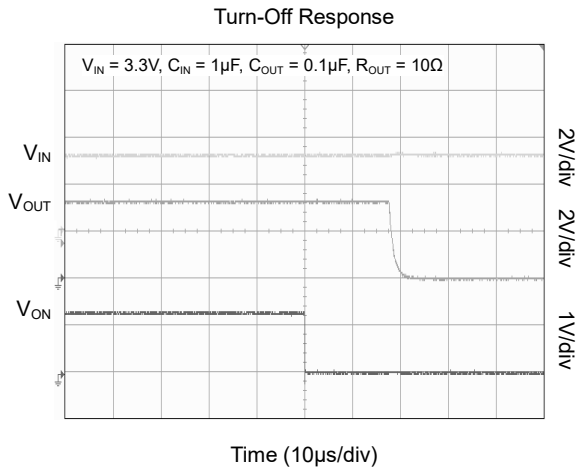
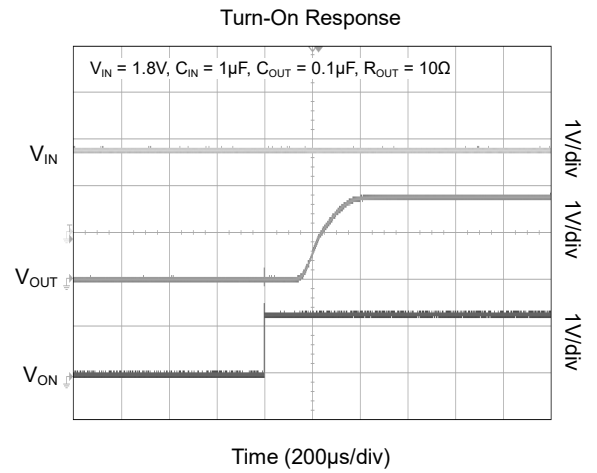
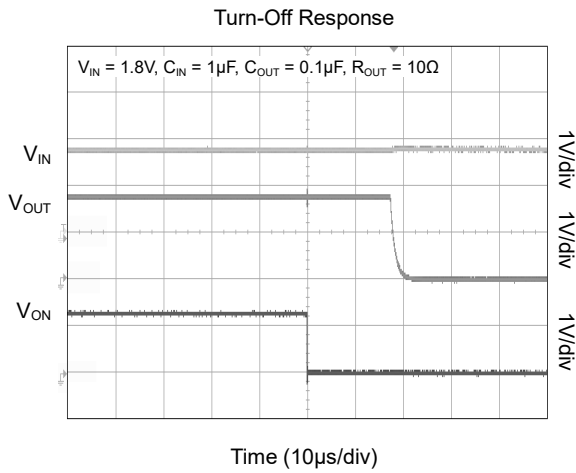
TYPICAL PERFORMANCE CHARACTERISTICS (continued)

C<sub>IN</sub> = 1μF, C<sub>OUT</sub> = 0.1μF, R<sub>OUT</sub> = 10Ω, V<sub>IH</sub> = 1.2V, V<sub>IL</sub> = 0V, T<sub>J</sub> = +25°C, unless otherwise noted.





**TYPICAL PERFORMANCE CHARACTERISTICS (continued)**



**DETAILED DESCRIPTION**

The SGM2571 is a single channel, up to 1A load switch in a small, space saving WLCSP package. The device implements an N-MOSFET to provide an ultra-low on-resistance for a low voltage drop across the device. A controlled rise time is used in applications to limit the inrush current.

**On/Off Control**

The ON pin controls the state of the switch. It is an active "high" pin and has a low threshold making it capable of interfacing with low voltage GPIO control signals. It can be used with any microcontroller with 1.2V GPIO. Applying V<sub>IH</sub> on the ON pin will put the switch in the on-state and V<sub>IL</sub> will put the switch in the off-state.

**Quick Output Discharge**

The SGM2571 integrates the quick output discharge (QOD) feature. When the switch is disabled (below V<sub>IL</sub>), a discharge resistance with a typical value of 270Ω is connected between the output and ground. This resistance pulls down the output and prevents it from floating when the device is disabled.

**Device Functional Modes**

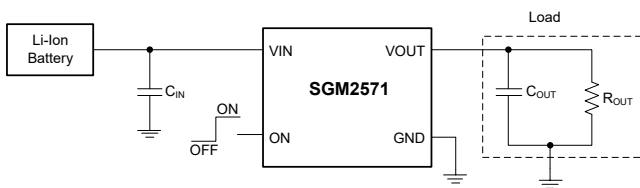
Table 1 describes the connection of the VOUT pin depending on the state of the ON pin.

**Table 1. VOUT Connection**

ON Pin	VOUT Pin
L	GND
H	VIN

**APPLICATION INFORMATION**

SGM2571 is a single channel, up to 1A load switch with ultra-low on-resistance, which can be directly connected to the 1S battery in portable consumer devices such as smartphones, NB-IoT, etc. The wide input voltage range (from 1V to 5.5V) makes it suitable to be used for lower voltage rails as well inside different end equipment to accomplish power sequencing, inrush current control and reducing leakage current in sub-systems that are in standby mode. Figure 4 shows the typical application circuit of SGM2571.



**Figure 4. Typical Application Circuit**

**Input Capacitor**

To limit the voltage drop on the input supply caused by transient inrush currents when the switch turns on into a discharged load capacitor, a capacitor needs to be placed between VIN and GND pins. A 1μF ceramic capacitor (C<sub>IN</sub>) must be placed close to the VIN pin. A higher value of C<sub>IN</sub> can be used to further reduce the voltage drop experienced as the switch is turned on into a large capacitive load.

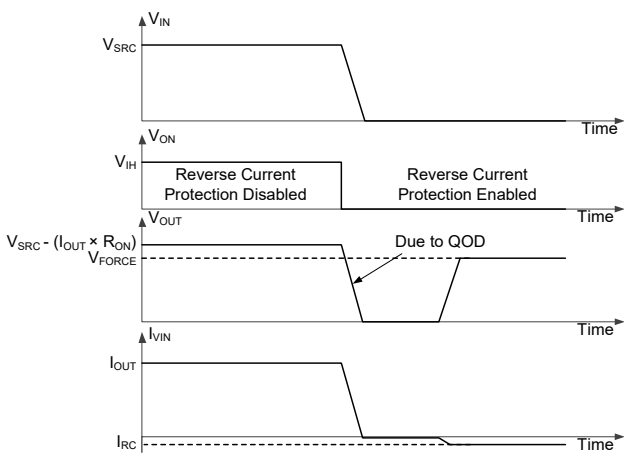
**Output Capacitor**

A 0.1μF output capacitor (C<sub>OUT</sub>) should be placed between VOUT and GND. This capacitor will prevent parasitic board inductances from forcing V<sub>OUT</sub> below GND when the switch turns off. It is generally recommended to have C<sub>IN</sub> greater than C<sub>OUT</sub> so that once the switch is turned on, C<sub>OUT</sub> can charge up to V<sub>IN</sub> without V<sub>IN</sub> dropping significantly. A 0.1μF ceramic capacitor that is placed close to the IC pins is usually sufficient.

**APPLICATION INFORMATION (continued)**

**Reverse Current Protection**

The SGM2571 includes a reverse current protection circuit, which stops a reverse current flowing from the VOUT pin to the VIN or GND pin when the voltage on VOUT becomes higher than V<sub>IN</sub>. This feature is particularly useful when the output of SGM2571 needs to be driven by another voltage source after SGM2571 is disabled (for example in a power multiplexer application). In order for this feature to work, SGM2571 has to be disabled and either of the following conditions shall be met: V<sub>IN</sub> > 1V or V<sub>OUT</sub> > 1V.



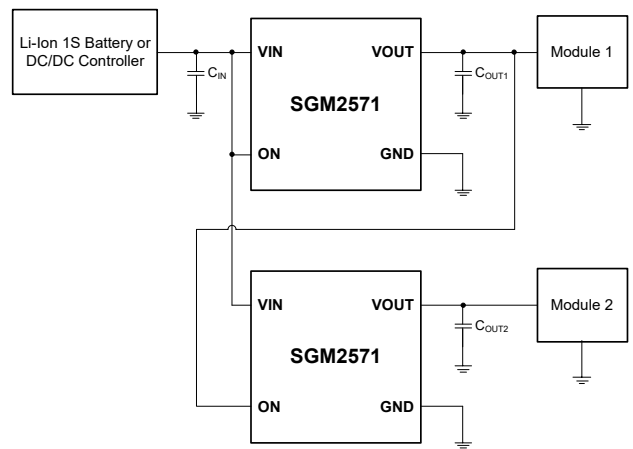
I<sub>VIN</sub> = current through VIN pin.  
 V<sub>SRC</sub> = input voltage applied to the device.  
 V<sub>FORCE</sub> = external voltage source forced at VOUT pin of the device.  
 I<sub>OUT</sub> = output load current.

**Figure 5. Reverse Current Protection**

Figure 5 demonstrates the ideal behavior of reverse current protection circuit in SGM2571. After the device is disabled via the ON pin and VOUT pin is forced to an external voltage V<sub>FORCE</sub>, a very small amount of current given by I<sub>RC</sub>, V<sub>IN</sub> will flow from V<sub>OUT</sub> to V<sub>IN</sub>. This will prevent any extra current loading on the voltage source supplying the V<sub>FORCE</sub> voltage.

**Power Supply Sequencing without a GPIO Input**

In many terminal devices, each module needs to be powered up in a pre-determined manner. SGM2571 can solve the power sequencing problem without increasing any complexity to the overall system. Figure 6 shows the configuration required to power up the two modules in a fixed sequence. The output of the first load switch is tied to the enable of the second load switch, so when module 1 is powered, the second load switch is enabled and module 2 is powered.



**Figure 6. Power Supply Sequencing without a GPIO Input**

**Power Supply Recommendations**

The device is designed to operate with a V<sub>IN</sub> range of 1V to 5.5V. This supply must be well regulated and placed as close to the device terminal as possible with the recommended 1μF bypass capacitor. If the supply is located more than a few inches from the device terminals, additional bulk capacitance may be required in addition to the ceramic bypass capacitors. If additional bulk capacitance is required, an electrolytic, tantalum, or ceramic capacitor of 10μF may be sufficient.

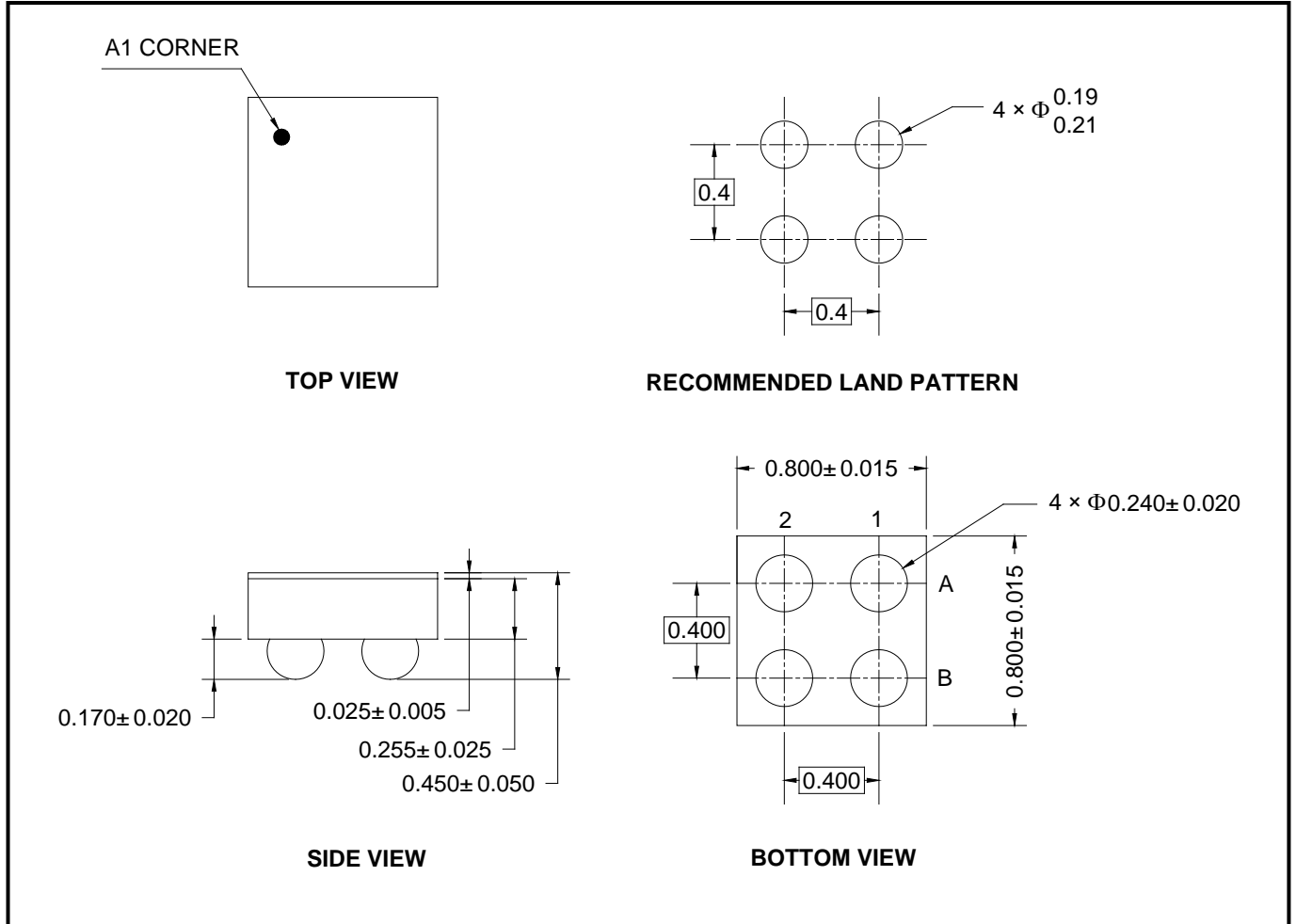
**REVISION HISTORY**

NOTE: Page numbers for previous revisions may differ from page numbers in the current version.

Changes from Original (DECEMBER 2019) to REV.A	Page
Changed from product preview to production data.....	All

PACKAGE OUTLINE DIMENSIONS

WLCSP-0.8x0.8-4B



NOTE: All linear dimensions are in millimeters.

# PACKAGE INFORMATION

## TAPE AND REEL INFORMATION

### REEL DIMENSIONS



### TAPE DIMENSIONS



NOTE: The picture is only for reference. Please make the object as the standard.

### KEY PARAMETER LIST OF TAPE AND REEL

Package Type	Reel Diameter	Reel Width W1 (mm)	A0 (mm)	B0 (mm)	K0 (mm)	P0 (mm)	P1 (mm)	P2 (mm)	W (mm)	Pin1 Quadrant
WLCSP-0.8×0.8-4B	7"	9.0	0.89	0.89	0.55	4.0	4.0	2.0	8.0	Q1

000001

# PACKAGE INFORMATION

## CARTON BOX DIMENSIONS



NOTE: The picture is only for reference. Please make the object as the standard.

## KEY PARAMETER LIST OF CARTON BOX

Reel Type	Length (mm)	Width (mm)	Height (mm)	Pizza/Carton
7" (Option)	368	227	224	8
7"	442	410	224	18

DD0002